

# \$470,848 - 1994 Calle Astrologia 102 Mayto Astrological Park, Sierra Madre Jalisco

MLS® #34035

**\$470,848**

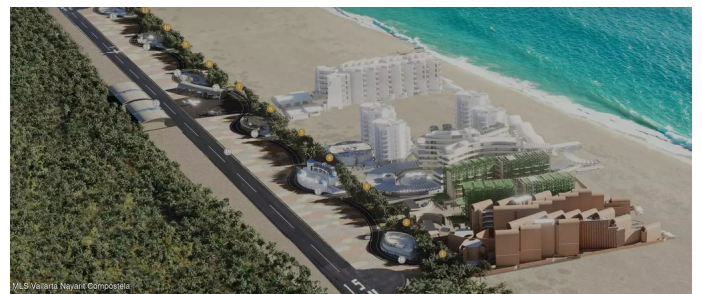
2 Bedroom, 2.00 Bathroom

Condos

N/A, Sierra Madre Jalisco, JALISCO

The world's first astrological park. The magic of architecture awakens as constellations intertwine with design: twelve rotundas, one for each zodiac sign, become gateways to the Temples, each triggering an array of amenities that form a mosaic of authentic and unique experiences an environmental and social development project in the Mexican Pacific, unfolding an ambitious growth plan. Here, a tapestry of beaches, capes, and bays weaves along the coasts of Jalisco and Colima, creating a singular stage of beauty VIRGO, es el primer templo dentro de Mayto Parque Astrológico. Un concepto único en su clase y de alto nivel con 12 selectos proyectos inspirados en los signos zodiacales.

VIRGO es una edificación vertical de carácter habitacional y hotelera diseñada bajo un concepto único inspirado en la arquitectura minimalista y contemporánea. Contando con 40 residencias, y 4 tipologías de una y dos plantas, y 36 unidades hoteleras, además de varias amenidades como Café/Galería, Wellnes Center, Área Recreativa al aire libre, Alberca, Restaurante, Sky Bar y Beach Club.



## Property View

Primary View      Ocean

## Essential Information

MLS® #	34035
USD	US \$470,848.00
CAD	CA \$650,264.63
Mexican Pesos	MX \$8,451,815.77
Bedrooms	2
Bathrooms	2.00
Full Baths	2
Construction Property Size	905.00 ft2
Type	Condos
Style	1 Level
Status	Active

### Community Information

Address	1994 Calle Astrologia 102 Mayto Astrological Park
Location	Beachfront, Gated Community, Oceanfront
Zone	Sierra Madre Jalisco
Area	Cabo Corrientes
Subdivision	N/A
Community	Mayto
State	JALISCO

### Unit Amenities

Furniture	Unfurnished
# Units in Develop	40
Unit #	102
Floor Number	1

### Common Amenities

Is Waterfront	Yes
---------------	-----

### HOA Information

HOA Fees (MX/Monthly)	\$10,000
HOA Info	24-hr Security, Common Area Electric, Common Area Landscaping, Common Area Maintenance, Common Area WiFi, Garbage Pick-up, Garden Maintenance, Gym, On-Site Admin, Pool Maintenance, Pest Control Maintenance







### Additional Information

Date Listed	October 9th, 2024
Days on Market	581


Property Name      Mayto Astrological Park  
Pre-Construction    Yes  
Pet Friendly         Yes

**UBICACIÓN**

Ubicado en Mayto, Jalisco, nuestro desarrollo florece dentro de una serena comunidad costera, lejos del bullicio urbano, donde la tranquilidad es el sonido predominante. Un rincón excepcional para el ecoturismo y el disfrute de la playa. El gran maestro de este proyecto contempla una infraestructura que convierte cada día en una experiencia única.

 55 miles from Puerto Vallarta	 A 2 hour 30 minutes drive from Puerto Vallarta
 A 15 minutes flight from Puerto Vallarta	 A 40 minutes flight from Guadalajara
 A 1 hour 30 minutes flight from CDMX	 A 2 hours flight from Monterrey

MI S Villista Nayarit Coahuila





## **John Forget**

Office: +52 (329) 298-6011

Cell: +52 (322) 109-4502

The prices herein advertised in USD currency are payable in Pesos MXN (Mexican currency) at the official exchange rate published at the Diario Oficial de la Federacion applicable on the date of payment or any other exchange rate agreed upon by the parties involved in the transaction.\* The list price in MXN (Mexican Pesos) reflects the property's price on the day it was listed. This price is provided for legal purposes. Please note that the owner may or may not accept this amount, and it is subject to negotiation. Information Deemed Reliable but Not Guaranteed. The listings on this site are displayed courtesy of the IDX program of AMPI Vallarta Nayarit MLS and may not be the listings of the site owner. ©2026 AMPI Vallarta Nayarit MLS. All rights reserved.

[Diario Oficial de la Federacion](#)